



SERVICE BULLETIN

Product : LCD monitor

Bulletin No. : 02-C/M-E0061

Model : GH15 LCD monitor.

Bulletin Date : Feb.25.2002

ECN Date :

SUBJECT : SIDE GASKET POSITION CHANGE.

Background : There are 2 side gasket in GH15 LCD model which connecting LCD panel body and metal shield for EMI(Electro-Magnetic Interference) countermeasure.

If this gasket attached wrongly, it may touch with main PCB and cause some problem.

such as OSD broken or Full white display, No raster, menu function does not operate etc...

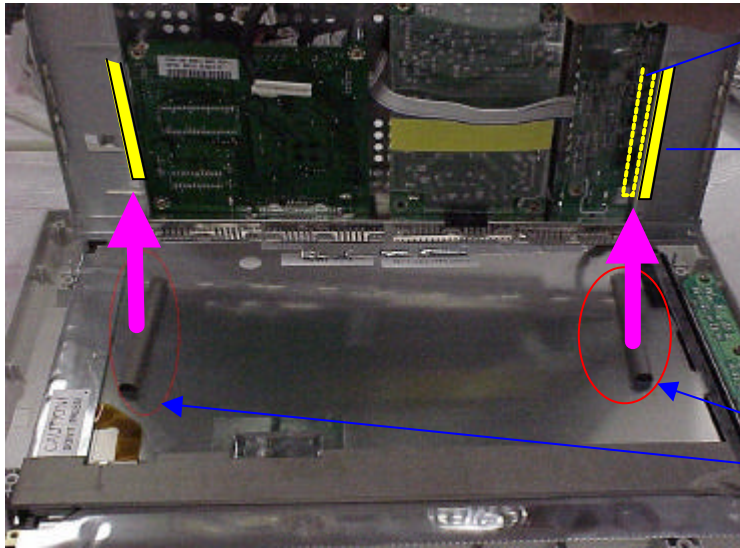
Samsung changed gasket attaching point from LCD panel to metal braket to prevent this problem.

(Application date : Mar.2002 ~)

Model name : GH15 all model.

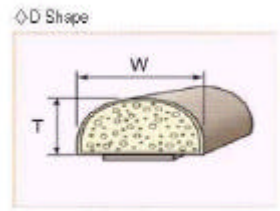
Solution Open back cover and remove cables and metal braket.

and check gasket position, if gasket touch with main board then, remove 2 gaskets and attach on metal braket. Check again wheter symptom disappeared.



Poor position
Touch with PBA => Cause Problem

Original Contact point



Gasket

